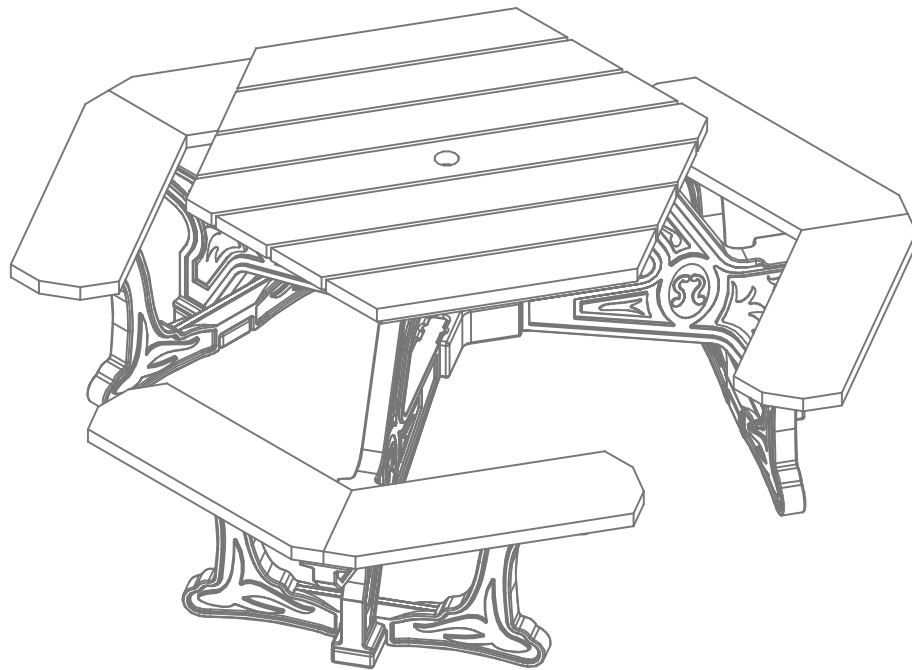


Econo-Mizer Plaza Picnic Table

For Fastener Pack
(FP-EPZ-CU-02)

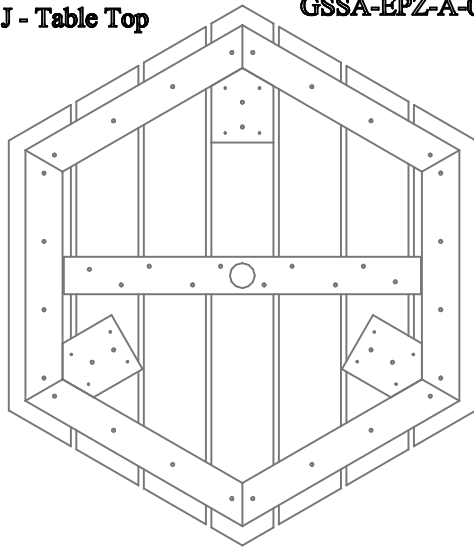


Congratulations ! !

You have just purchased the finest recycled plastic
picnic table available. Enjoy ! ! !

Before assembly, please make sure all components are included.

J - Table Top
(1) - One Table Top
GSSA-EPZ-A-00



(3) - Three Right Seats
OTP-LWP-B-02

B - Right Seat

B - Right Seat

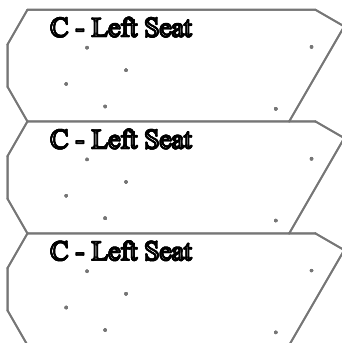
B - Right Seat

C - Left Seat

C - Left Seat

C - Left Seat

(3) - Three Left Seats
OTP-LWP-C-02



(1) - One Fastener Pack
FP-EPZ-CU-02

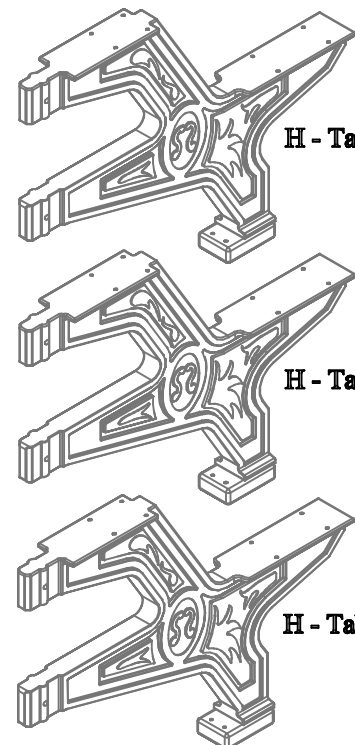
FP - Fastener Pack

H - Table Leg

H - Table Leg

H - Table Leg

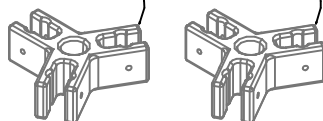
(3) - Three Table Legs
GSSA-PZ-B-01



(2) - Two Table Centers
PS-GSCP-A-01

R - Table Center

R - Table Center

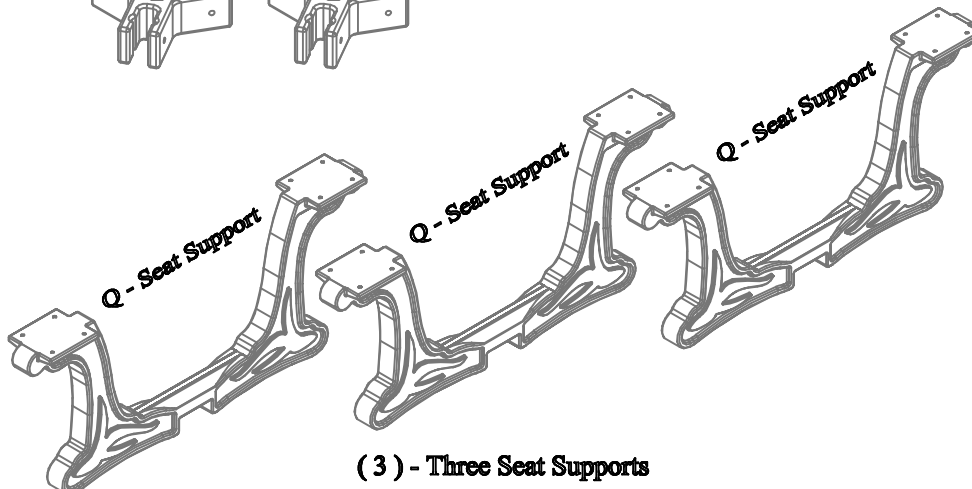


Q - Seat Support

Q - Seat Support

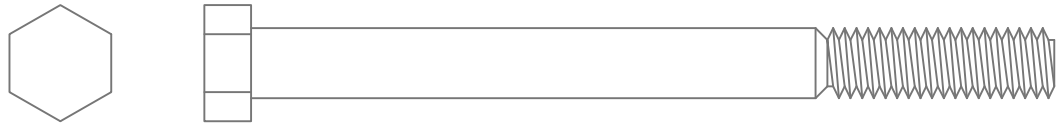
Q - Seat Support

(3) - Three Seat Supports
PS-GSSS-A-01

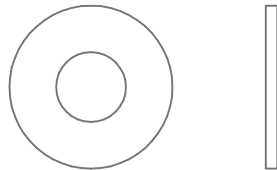


Before assembly, please make sure all fasteners are included.

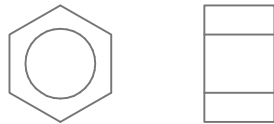
6 - 3/8" x 4-1/4" Hex Head Bolt



12 - 3/8" Flat Washer



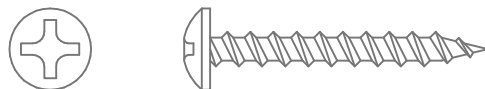
6 - 3/8" Nylon Lock Nut



6 - #12 x 3" Flat Head Phillips Screw



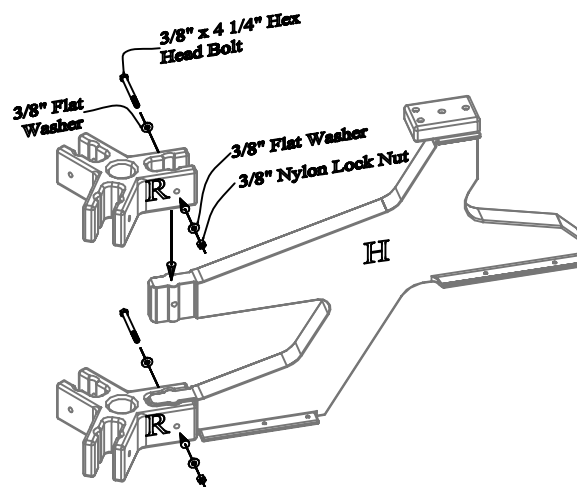
48 - #12 x 1 1/2" Pan Head Phillips Screw



Also needed for this assembly will be the following materials:

1 - #3 Phillips Drive Bit

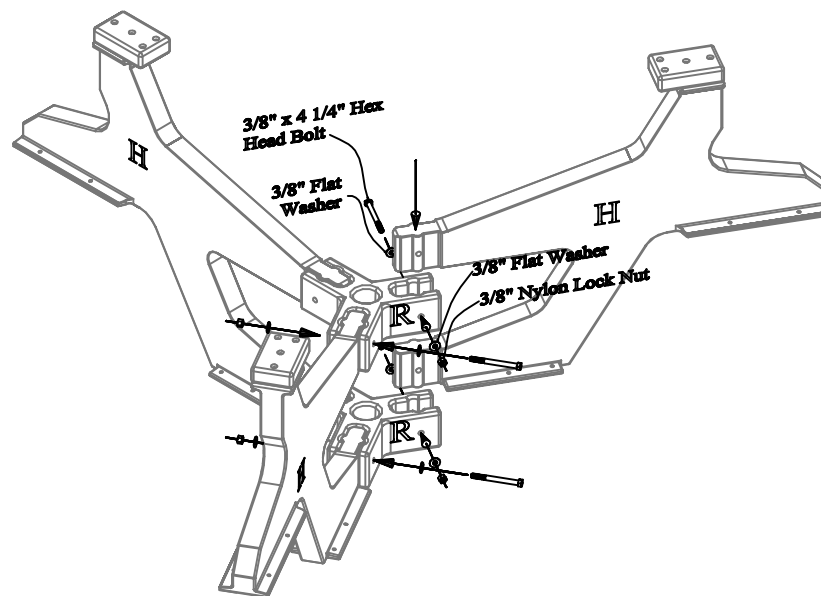
2 - 9/16" Socket Wrench



Step #1:

Slide (1) One Table Center on to each end of the Table Leg as shown above. Use (1) One 3/8" x 4 1/4" Hex Head Bolt and (1) One 3/8" Flat Washer along with (1) One 3/8" Flat Washer and (1) One 3/8" Nylon Lock Nut per hole to secure.

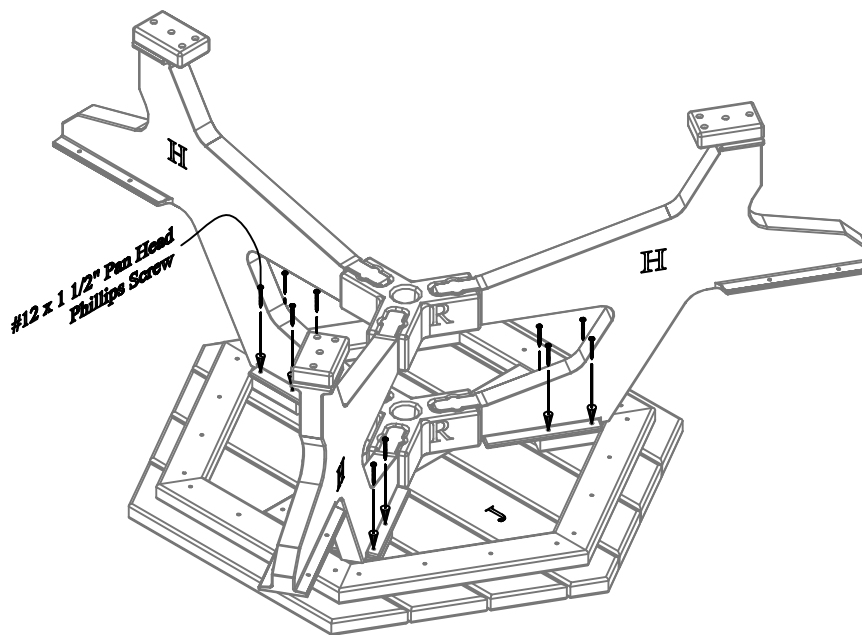
Do not tighten bolts completely. This will be done in a later step.



Step #2:

Slide the remaining Table Legs in to the Table Centers. Use (1) One 3/8" x 4 1/4" Hex Head Bolt and (1) One 3/8" Flat Washer along with (1) One 3/8" Flat Washer and (1) One 3/8" Nylon Lock Nut per hole to secure.

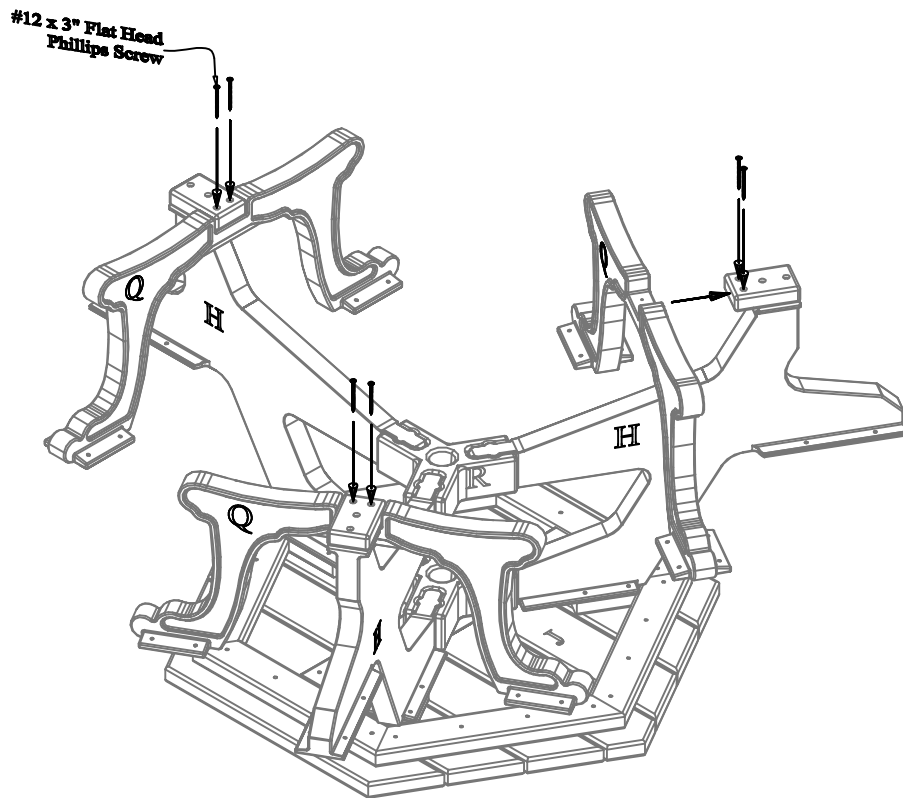
Do not tighten bolts completely. This will be done in a later step.



Step #3:

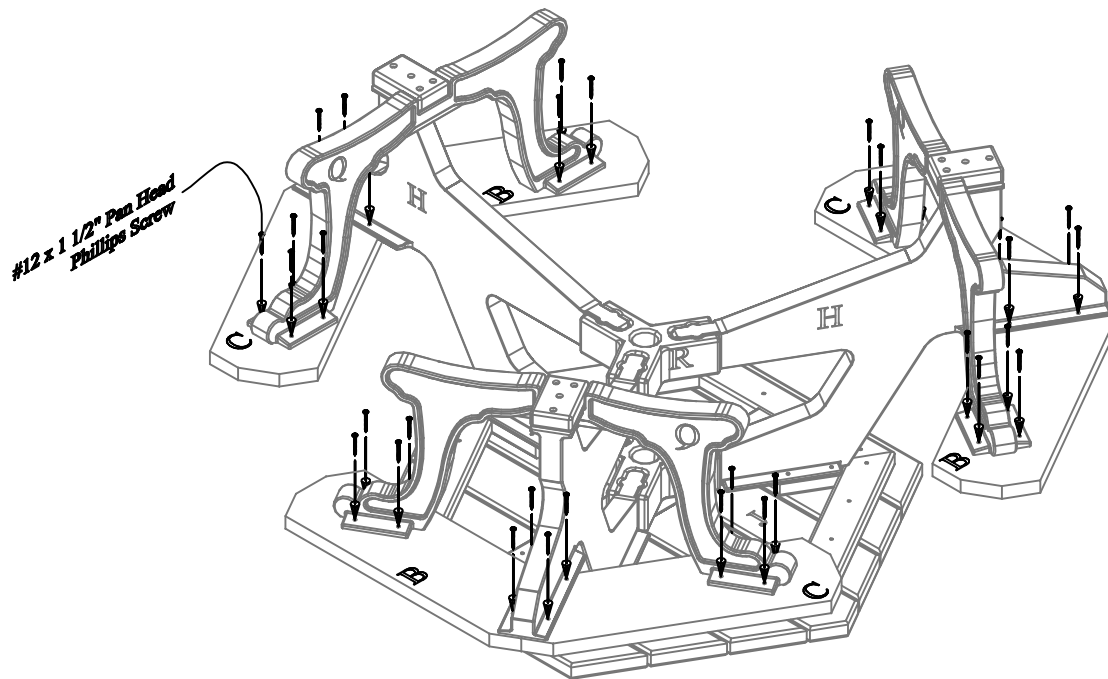
While the Table Top is upside down, place the leg assembly onto the Table Top as shown above. Align the pre-drilled holes in the Table Legs with the pilot holes in the Table Top. Use (1) One #12 x 1 1/2" Pan Head Screw per hole to secure.

Be sure to tighten all screws after completing this step.



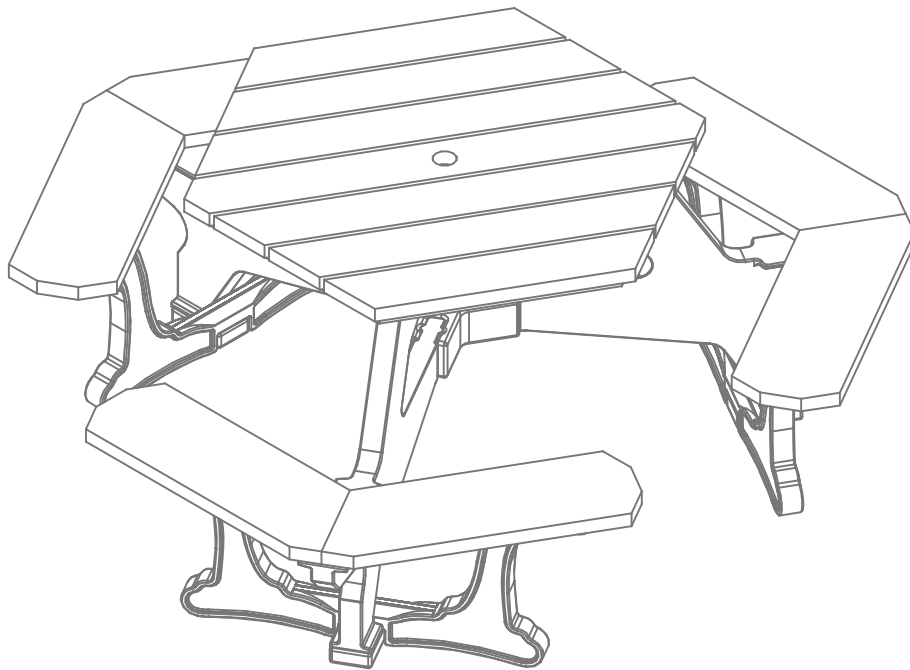
Step #4:

While the table is upside down, align the pre-drilled holes in the Table Leg to the pilot holes in the Seat Support as shown above. Use (1) One #12 x 3" Flat Head Screw per hole to secure.



Step #5:

Place the seats into position as shown above. Align the pilot holes in the seats with the pre-drilled holes in the Seat Supports and Table Legs. Use (1) One #12 x 1 1/2" Pan Head screw per hole to secure.



Step #6:

Flip the table upright onto it's frame. Please take caution while flipping the table. At this point in assembly the table weighs approximately 205 Pounds.